



Glass Equipment (India) Limited

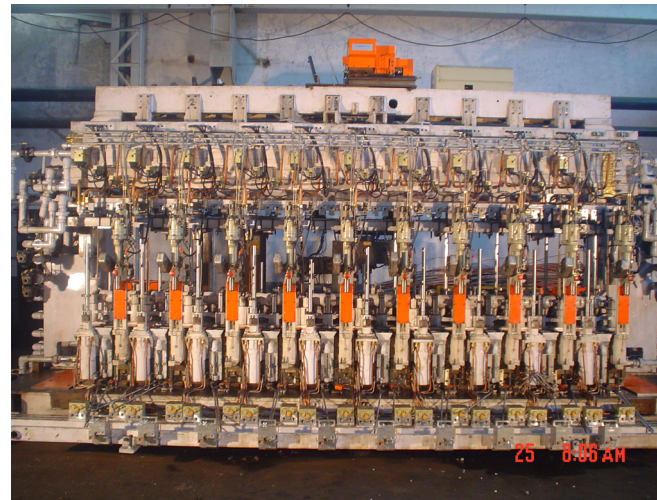
Address: PO Box No. 7, Bahadurgarh - 124507, Distt. Jhajjar, Haryana, INDIA.

Phone no.: +91 (01276) 221400 | *Fax no.:* +91 (01276) 221555, 221666

E-mail: info@glasseq.com | *Web-Site:* <http://www.glasseq.com>



IS FORMING MACHINES



- TYPE : EF
- AVAILABLE IN 8, 10 & 12 SECTION CONFIGURATION
- PRODUCTION FLEXIBILITY IN SG 4 ¼” DG, 5” DG & 3” TG
- INTERCHANGABLE PARTS & MECHANISMS

GEIL offers a truly diversified spectrum of IS Forming Machines for efficient glass container production. Well designed modular sections and machine structures make it possible to optimally meet specific production output requirements.

Versatile enough to manufacture glass containers of capacities ranging from 5ml to 3200ml, GEIL's machines are supplied with Electronic timing control systems and are built up to 12 sections with single, double or triple gobs for either blow & blow or press & blow or narrow neck press & blow process with various centers.

Regd. (Head) Office: 2, Red Cross Place, Kolkata – 700001, INDIA.

Phone: +91 (033) 22482341-4 | *Fax:* +91 (033) 22482367 | *E-mail:* hq@glasseq.com



Glass Equipment (India) Limited

Address: PO Box No. 7, Bahadurgarh - 124507, Distt. Jhajjar, Haryana, INDIA.

Phone no.: +91 (01276) 221400 | Fax no.: +91 (01276) 221555, 221666

E-mail: info@glasseq.com | Web-Site: <http://www.glasseq.com>



MACHINE FEATURES

| | SINGLE GOB | 4.1/4" DOUBLE GOB | 5" DOUBLE GOB | 3" TRIPLE GOB |
|---|------------|-------------------|---------------|---------------|
| ELECTRONIC TIMING CONTROL | ♦ | ♦ | ♦ | ♦ |
| SERVO DRIVE SYSTEM | ♦ | ♦ | ♦ | ♦ |
| SERVO GOB DISTRIBUTOR | ♦ | ♦ | ♦ | ♦ |
| ELECTRONIC PUSHER SYSTEM | ♦ | ♦ | ♦ | ♦ |
| DELIVERY SYSTEM FOR SINGLE SCOOP ARRANGEMENT | ♦ | ♦ | ♦ | ♦ |
| SCOOP, TROUGH & DEFLECTOR | ♦ | ♦ | ♦ | ♦ |
| AUTOMATIC LUBRICATION | ♦ | ♦ | ♦ | ♦ |
| BASE MOUNTED POPPET TYPE SOLENOID/AIR OPERATED VALVES | ♦ | ♦ | ♦ | ♦ |
| PRESSURE REGULATORS WITH FEEDBACK ARRANGEMENT | ♦ | ♦ | ♦ | ♦ |
| RIGID BEAM OR SHIFTING TYPE FOR SG/DG CONVERSION | ♦ | ♦ | ♦ | ♦ |
| UPRIGHTS WITH INTEGRAL AIR MANIFOLDS | ♦ | ♦ | ♦ | ♦ |
| BED WITH BOTTOM INDIVIDUAL WIND COOLING | ♦ | ♦ | ♦ | ♦ |
| SETTLE BLOW, FINAL BLOW, FINISH COOLING, PLUNGER UP & DOWN, COUNTER BLOW, MANIFOLDS IN STAINLESS STEEL & PIPING OF ADEQUATE CAPACITY. | ♦ | ♦ | ♦ | ♦ |
| AIR TANKS FOR PLUNGER UP OPERATION (P & B & NNPB ONLY) | ♦ | ♦ | ♦ | ♦ |
| MODULER 'EF' TYPE SECTION FRAME CAST FROM SPECIAL IRON ALLOY | ♦ | ♦ | ♦ | ♦ |
| MOC LINKAGE MECHANISM IN OIL BATH | ♦ | ♦ | ♦ | ♦ |
| 2 WAY AIR OPERATED FUNNEL MECHANISM | ♦ | ♦ | ♦ | ♦ |
| PANTOGRAPH TYPE BAFFLE MECHANISM | ♦ | ♦ | ♦ | ♦ |
| PLUNGER & BLOW HEAD MECHANISMS -QUICK CHANGE TYPE | ♦ | ♦ | ♦ | ♦ |
| INVERT & TAKE OUT MECHANISMS - WITH CONSTANT CUSHION | ♦ | ♦ | ♦ | ♦ |
| NECK RING MECHANISM | ♦ | ♦ | ♦ | ♦ |
| DAMPER TYPE BLOW MOULD COOLING MECHANISM | ♦ | ♦ | ♦ | ♦ |
| BLANK MOULD COOLING | ♦ | ♦ | ♦ | ♦ |
| BLOW BRACKET & ANTI DEFLECTION TYPE BLANK BRACKET | ♦ | ♦ | ♦ | ♦ |
| CONVEYOR WITH MOTORISED HEIGHT ADJUSTMENT | ♦ | ♦ | ♦ | ♦ |
| DUAL HEAD PROTECTED SILENT CHAIN | ♦ | ♦ | ♦ | ♦ |
| REGULATED DEAD PLATE COOLING | ♦ | ♦ | ♦ | ♦ |
| RIGID MACHINE OR DG/TG CONVERTIBLE | ♦ | ♦ | ♦ | ♦ |
| FORMING PROCESS | ♦ | ♦ | ♦ | ♦ |
| BLOW & BLOW | ♦ | ♦ | ♦ | ♦ |
| PRESS & BLOW | ♦ | ♦ | ♦ | ♦ |
| NARROW NECK PRESS & BLOW | ♦ | ♦ | ♦ | ♦ |

Regd. (Head) Office: 2, Red Cross Place, Kolkata – 700001, INDIA.

Phone: +91 (033) 22482341-4 | Fax: +91 (033) 22482367 | E-mail: hq@glasseq.com



Glass Equipment (India) Limited

Address: PO Box No. 7, Bahadurgarh - 124507, Distt. Jhajjar, Haryana, INDIA.

Phone no.: +91 (01276) 221400 | *Fax no.:* +91 (01276) 221555, 221666

E-mail: info@glasseq.com | *Web-Site:* <http://www.glasseq.com>



VARIABLES

FUNNEL ARM

BAFFLE ARM

BLOW HEAD ARM

TAKE OUT TONG HEAD

MOULD HOLDER WITH INSERT

AND MOUNTING PARTS

TAKE OUT TONG ARM

NECK RING HOLDER

STANDARD/ QUICK CHANGE

STANDARD/ QUICK CHANGE/PANTOGRAPH TYPE

STANDARD/QUICK CHANGE

ADJUSTABLE

SINGLE/DOUBLE/TRIPLE DECK FOR BLOW & BLANK

BELT DRIVEN

Regd. (Head) Office: 2, Red Cross Place, Kolkata – 700001, INDIA.

Phone: +91 (033) 22482341-4 | *Fax:* +91 (033) 22482367 | *E-mail:* hq@glasseq.com



Glass Equipment (India) Limited

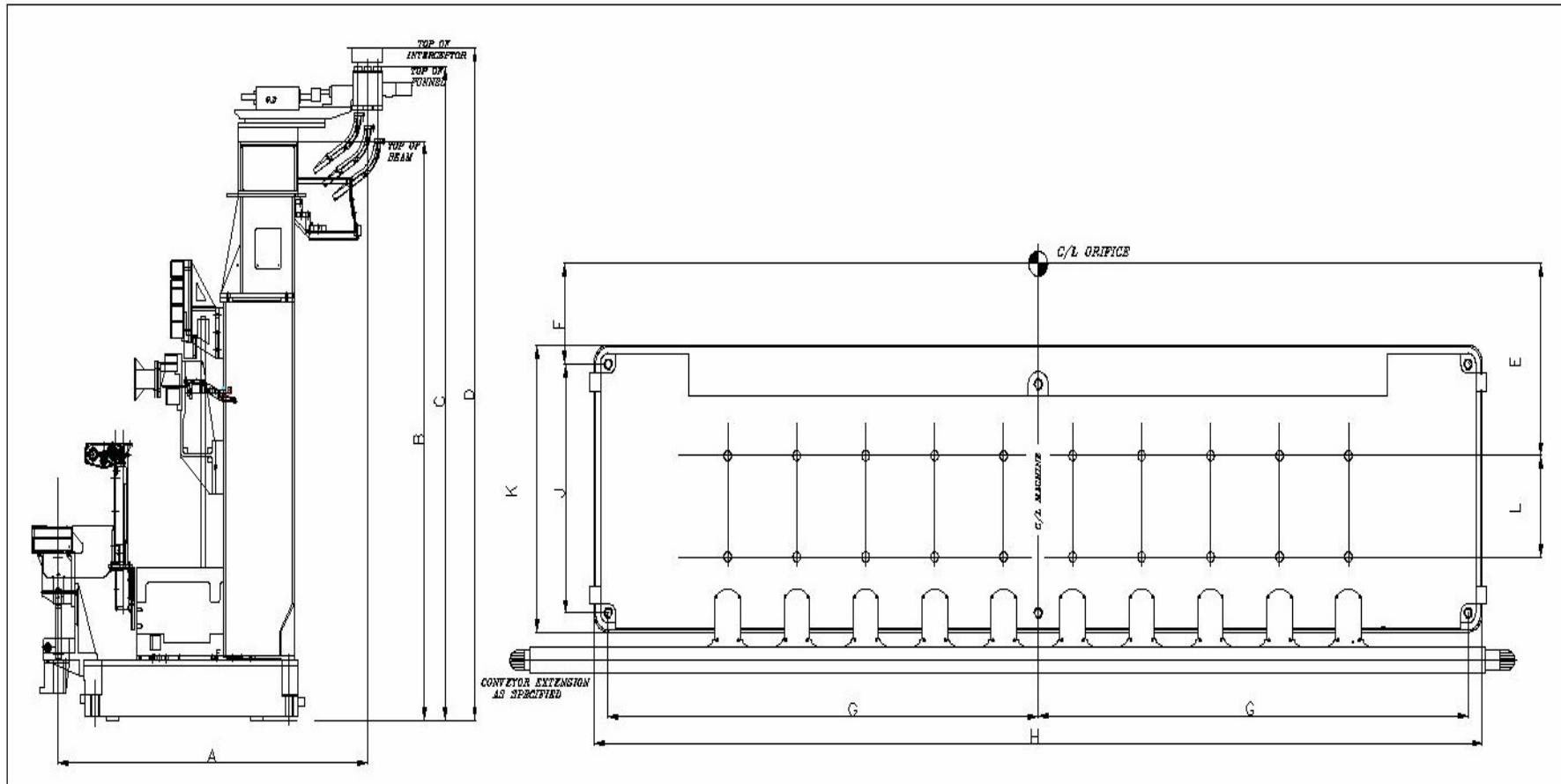
Address: PO Box No. 7, Bahadurgarh - 124507, Distt. Jhajjar, Haryana, INDIA.

Phone no.: +91 (01276) 221400 | Fax no.: +91 (01276) 221555, 221666

E-mail: info@glasseq.com | Web-Site: <http://www.glasseq.com>



MACHINE LAYOUT





Glass Equipment (India) Limited

Address: PO Box No. 7, Bahadurgarh - 124507, Distt. Jhajjar, Haryana, INDIA.

Phone no.: +91 (01276) 221400 | Fax no.: +91 (01276) 221555, 221666

E-mail: info@glasseq.com | Web-Site: <http://www.glasseq.com>



DIMENSIONAL DETAILS OF IS MACHINE

| DIMENSION | DELIVERY | IS - 8 | IS - 10 | IS - 12 |
|-----------|--------------------|-----------|-----------|-----------|
| A | 3"TG 4.1/4"DG | 2363 mm | 2363 mm | 2667.3 mm |
| | 5"DG | 2390 mm | 2390 mm | 2667.3 mm |
| B | 3" TG & 4.3/8DG | 3080 mm | 3495.6 mm | 3910 mm |
| C | 3"TG 4.1/4"DG | 3539 mm | 3930 mm | 4396 mm |
| | 4.3/8DG | 3550 mm | 3942 mm | 4362 mm |
| D | 3"TG 4.1/4"DG | 3774 mm | 4165 mm | 4631 mm |
| | 4.3/8DG | 3785 mm | 4177 mm | 4597mm |
| | 4.1/4 DG | 1168.4 mm | 1168.4 mm | 1425.5 mm |
| E | 3" TG | 1168.4 mm | 1168.4 mm | 1425.5 mm |
| | 5" DG | 1158.8 mm | 1158.8 mm | 1419.2 mm |
| F | 4.1/4"DG,5"DG,3"TG | 638.9 mm | 607.4 mm | 867.7 mm |
| G | 4.1/4"DG,5"DG,3"TG | 2476.5 mm | 3323.4 mm | 3854.4 mm |
| H | 4.1/4"DG,5"DG,3"TG | 5181.6 mm | 6866.4 mm | 7931.2 mm |
| J | 4.1/4"DG,5"DG,3"TG | 1301.7 mm | 1500 mm | 1651 mm |
| K | 4.1/4"DG,5"DG,3"TG | 1530.3 mm | 1737 mm | 1883 mm |
| | 4.1/4 DG | 610.4 mm | 610.4 mm | 610.4 mm |
| L | 3" TG | 610.4 mm | 610.4 mm | 610.4 mm |
| | 5" DG | 629.5 mm | 629.5 mm | 629.5 mm |

Regd. (Head) Office: 2, Red Cross Place, Kolkata – 700001, INDIA.

Phone: +91 (033) 22482341-4 | Fax: +91 (033) 22482367 | E-mail: hq@glasseq.com



Glass Equipment (India) Limited

Address: PO Box No. 7, Bahadurgarh - 124507, Distt. Jhajjar, Haryana, INDIA.

Phone no.: +91 (01276) 221400 | Fax no.: +91 (01276) 221555, 221666

E-mail: info@glasseq.com | Web-Site: <http://www.glasseq.com>



WARE SPECIFICATION

| | SINGLE GOB | | 4.1/4" DOUBLE GOB | | |
|---|---------------|---------------|-------------------|----------------|----------------|
| | B & B | P & B | B&B | P&B | NNPB |
| CONTAINER LIMITS | | | | | |
| Maximum body diameter with vacuum | 170mm(6.688") | 170mm(6.688") | 80mm(3.125") | 80mm(3.125") | - |
| Maximum body diameter without vacuum | 178mm(7") | 178mm(7") | 90mm(3.562") | 90mm(3.562") | - |
| Maximum body diameter with blow mould cooling | 156mm(6.125") | 156mm(6.125") | 80mm(3.125") | 80mm(3.125") | - |
| HEIGHT UNDER FINISH | | | | | |
| Minimum | 35mm(1.375") | 48mm(1.875") | 57mm(2.25") | 46mm(1.81") | 46mm(1.81") |
| Maximum | 343mm(13.5") | 267mm(10.5") | 292mm(11.5") | 282mm(11.125") | 282mm(11.125") |
| FINISH DIAMETER | | | | | |
| Maximum | 48mm | 120mm | 48mm | 83mm | 38mm |

| 5" DOUBLE GOB | | | 3" TRIPLE GOB | | |
|----------------|----------------|------|---------------|---------------|---------------|
| B&B | P&B | NNPB | B&B | P&B | NNPB |
| 95mm(3.688") | 95mm(3.688") | - | 45mm(1.75") | 45mm(1.75") | - |
| 102mm(4") | 102mm(4") | - | 52mm(2.062") | 52mm(2.062") | - |
| 100mm(3.938") | 100mm(3.938") | - | 51mm(2") | 51mm(2") | - |
| 60mm(2.375") | 60mm(2.375") | - | 58mm(2.281") | 45mm(1.75") | 45mm(1.75") |
| 325mm(12.813") | 288mm(11.344") | - | 250mm(9.875") | 240mm(9.437") | 240mm(9.437") |
| 48mm | 90mm | - | 30mm | 38mm | 38mm |



Glass Equipment (India) Limited

Address: PO Box No. 7, Bahadurgarh - 124507, Distt. Jhajjar, Haryana, INDIA.

Phone no.: +91 (01276) 221400 | Fax no.: +91 (01276) 221555, 221666

E-mail: info@glasseq.com | Web-Site: <http://www.glasseq.com>



SERVICE REQUIREMENTS

| Application | Pressure | | 8 SECTION | | 10SECTION | | 12 SECTION | |
|-----------------------------|------------------------|----------------------|----------------------|---------------------|----------------------|-------------------|----------------------|------------------|
| | bar | p.s.i. | Nm ³ /min | c.f.m. | Nm ³ /min | c.f.m. | Nm ³ /min | c.f.m. |
| Low Pressure Operating Air | 2.1 | 30 | 9.6 | 339 | 12 | 424 | 14.4 | 500 |
| High Pressure Operating Air | 3.1 | 45 | 5 | 177 | 6.3 | 222 | 7.6 | 268 |
| Forming Air Blow & Blow | 3.1 | 45 | 12.6 | 445 | 15.8 | 558 | 19 | 671 |
| Forming Air Press & Blow | 3.1 | 45 | 15.8 | 558 | 19.8 | 699 | 23.8 | 840 |
| Total High Pressure Air* | 3.1 | 45 | 20.8 | 735 | 26.1 | 921 | 31.4 | 1108 |
| Vacuum | 635mm Hg | 25" Hg | 8.4 | 297 | 10.5 | 371 | 12.6 | 444 |
| Cooling Air | 600mm H ₂ O | 23½ H ₂ O | 600 | 21188 | 750 | 26486 | 1000 | 31784 |
| Cooling Water | 2.1 | 30 | 15 l/day | 3¾ US gal/min | 15 l/day | 3¾ US gal/min | 15 l/day | 3¾ US gal/min |
| Lubrication Oil | 80** | 1160** | 10 l/day | 2½ US gal/day | 12.5 l/day | 3¼ US gal/day | 15 l/day | 2 US gal/day |
| Cushioning Oil | 2.1 | 30 | 2-5 l/day | 1/2 - 1¼ US gal/day | 3-6 l/day | ¾ - 1½ US gal/day | 4 -7 l/day | 1/4-1 US gal/day |

Regd. (Head) Office: 2, Red Cross Place, Kolkata – 700001, INDIA.

Phone: +91 (033) 22482341-4 | Fax: +91 (033) 22482367 | E-mail: hq@glasseq.com